

Allina Health: Improving VTE Care and Prevention across a Large Health System



HEALTHCARE ORGANIZATION

Integrated Delivery Healthcare System & Pioneer ACO

PRODUCTS AND SERVICES

- Late-Binding™ Data Warehouse
- Health Catalyst® Analytics Platform
- Population Health & Patient Injury Prevention—VTE Analytics Application

EXECUTIVE SUMMARY

Allina Health embarked on a three-year journey to address prevention and improved care for its Venous thromboembolism (VTE) patients—one of the most common causes of hospital-related death in the United States—and one of the most preventable.

Recognizing the need for standardizing best practices system-wide and creating a culture and infrastructure for continuous improvement, Allina implemented a physician-sponsored, multi-disciplinary workgroup to standardize order sets and engage clinicians in improvement efforts. The health system also implemented an enterprise data warehouse from Health Catalyst® and a VTE analytics dashboard.

These efforts have resulted in measurable improvement in VTE prevention and care system-wide, including the following:

- Increased VTE bundle compliance rate by 19 percent
- Integrated system-wide approved VTE order group in 308 order sets
- Achieved 97.9 percent compliance with VTE prophylaxis
- 63 percent increase in compliance with VTE warfarin therapy discharge instructions

ADDRESSING THE MOST PREVENTABLE CAUSE OF HOSPITAL-RELATED DEATH

Venous thromboembolism (VTE) is a common, potentially lethal disorder that can result in long-term complications including pulmonary hypertension.¹ Although the exact incidence of VTE is unknown, experts estimate that 1 million cases of the disorder occur in the United States each year, many of which represent recurrent disease.² VTE occurs in both hospitalized and non-hospitalized patients, however, nearly two thirds of all VTE events result from hospitalization. A particularly sobering fact is that approximately 300,000 of these patients die.³ In fact, VTE-associated pulmonary embolism is the third most common cause of hospital-related death



Continuously improving care for patients is foundational to who we are at Allina Health. This kind of improvement requires a comprehensive, multidisciplinary effort. It requires good data to identify improvement opportunities and analytics tools to track progress. It requires educating clinicians and staff along the way to ensure adoption of new processes and tools.

Michael Ornes, MD
Hospitalist, Allina Health

and the most common potentially preventable cause of hospital-related death.⁴

Because of the prevalence of and risks associated with VTE, the Joint Commission (TJC) and the National Quality Forum developed six measures in 2005 to help care providers prevent and treat VTE. These measures were subsequently aligned with the Centers for Medicare & Medicaid Services (CMS) and became part of the CMS Inpatient Quality Reporting program.⁵

Allina Health, a not-for-profit health system dedicated to helping people live healthier lives in communities throughout Minnesota and western Wisconsin, committed itself to improving its processes for VTE prevention and treatment. The system—which consists of more than 26,000 employees, 5,000 affiliated and employed physicians, 13 hospitals, over 90 clinics, 16 pharmacies, and numerous specialty medical services—discovered excessive variation in its VTE processes across the enterprise. To reduce this variation and deliver on its brand promise that all patients would receive optimal care regardless of treatment location, Allina embarked on a three-year journey to improve VTE care.

A PROLIFERATION OF ORDER SETS AND A LACK OF DATA

Allina faced a significant challenge that all large health systems must overcome when integrating clinically across the enterprise: It had no system-wide standard practices in place to provide VTE prophylaxis or VTE follow-up care for the general inpatient medical population. The electronic health record (EHR) contained hundreds of order sets used when admitting patients, but no standard options existed for ordering VTE prophylaxis or for reminding providers when they failed to assess or order prophylaxis. In addition, Allina discovered that risk assessments for VTE existed in several forms and that clinicians did not apply them consistently across patients.

A lack of readily available data and easily repeatable analytics processes also served as a barrier for Allina to improve VTE care and meet CMS Core Measures. Health system leaders recognized they had limited access to high-quality data integrated from clinical, financial, and other source systems. For example, they could query frequency of prophylaxis orders, but they didn't have a good process in place for understanding contraindications or the level of risk a patient faced for developing VTE. Furthermore, when patients developed VTE, the system had no way to track best practices in follow-up care.

“Optimal patient care is the reason for our VTE program, and our VTE dashboard helps us achieve that across our 13 hospital system. Data from well thought out tools provides front line care givers with the info needed to assure the right care happens every time.

Linda Dickey, RN, CNS
Quality
Allina Health

NEW ORGANIZATIONAL STRUCTURES, BEST PRACTICES, AND ANALYTICS FOR VTE PREVENTION

As Allina embarked on its journey to promote optimal prevention and treatment of VTE, its goal was to identify and spread best practice throughout the enterprise while also improving the VTE Core Measure performance scores by incorporating best practice into provider workflow.

The health system began its improvement initiative by identifying a physician executive sponsor and establishing a physician-sponsored, system-wide VTE workgroup. These leaders fostered a multi-disciplinary, highly collaborative process across clinical teams in the hospitals by involving clinicians (including nursing, pharmacy, and physicians), clinical decision support, business intelligence experts, education, analysts and enterprise reporting. Leaders achieved physician and staff engagement through involvement, transparency and education.

In addition to creating new organizational structures and engaging clinicians, Allina articulated a number of objectives, including:

- Creating a single, standard VTE risk-assessment tool and order group incorporated into nearly all general admission and several postoperative order sets
- Increasing the provision of VTE prophylaxis or “reason why not given” documentation
- Improving compliance with providing all teaching points in discharge instructions for VTE patients discharged on warfarin
- Improving overall optimal care bundle compliance for VTE

To measure performance against these objectives and to drive clinical transformation, Allina relied on their late-binding enterprise data warehouse (EDW) and analytics platform from Health Catalyst®. The EDW aggregates clinical, financial, operational, patient satisfaction and other data to create consistent views of the data and to inform decisions. By automating the data-capture process—which involved creating structured data fields in the EHR to automatically capture and extract required data into the EDW—Allina has been able to move beyond its once highly-manual analytics process. This automation makes the method of capturing and communicating information and reporting to regulatory bodies significantly more efficient, which frees valuable resources to focus on using data to drive improvement.

“Optimizing VTE prophylaxis and care at Allina was essential—not only because CMS has made VTE part of its Core Measures program, but also because we always strive to be the best at what we do for our patients. We wanted to ensure that the right people were doing the right thing for patients at the right time.

Michael Ornes, MD
Hospitalist, Allina Health

Allina also implemented a VTE dashboard (see Figure 2) to monitor and manage performance. This dashboard enables the team to identify target areas for improvement and to guide decisions in selecting and evaluating VTE prophylaxis and treatment tools. The dashboard also helps the team to drive behavior change and serves as a valuable case-finding tool. For example, it enables the team to identify groups of high-risk patients that may need more focused interventions for VTE prophylaxis.

Health system leaders engaged hospitals throughout the system to gain buy-in and participation in the initiative. For example, Allina engaged hospitals in identifying best practices. If one facility identified a best practice, leadership made a conscious effort to spread it across the entire system. In the midst of this drive for standardization, leadership still allowed each hospital to make slight modifications to the approach—as long as it delivered the same results. Where possible and appropriate, the team hardwired best practice into the EHR to promote consistency and optimal care, while also striving to avoid disrupting physician workflow or causing alert fatigue.

IMPROVED COMPLIANCE WITH VTE BEST PRACTICES SYSTEM-WIDE

The combination of analytics and engagement efforts has resulted in measurable improvement in VTE prevention and care across Allina facilities. Key achievements include the following:

Increased VTE bundle compliance rate by 19 percent

Allina increased its compliance with the VTE optimal care bundle by an absolute percentage of 19 percent – resulting in an actual compliance rate of 97 percent (see Figure 1). Leadership attributes this achievement to a combination of:

- ▶ Access to trustworthy data with filtering and drill-down capability
- ▶ Effective multidisciplinary collaboration and strong program management (deemed essential to support the success and engagement of the physicians involved in the program)
- ▶ Training and communications that were sustained to facilitate adoption across the organization
- ▶ Identification of tasks/processes that the clinicians could stop doing in order to allow time for compliance with this new ask

Education is important—but it has a shelf life. That’s why it isn’t enough simply to educate clinicians on best practice. You need to take it a step further and hardwire improvements into the care process.

Stephen Mandt, PharmD
Pharmacy
Allina Health

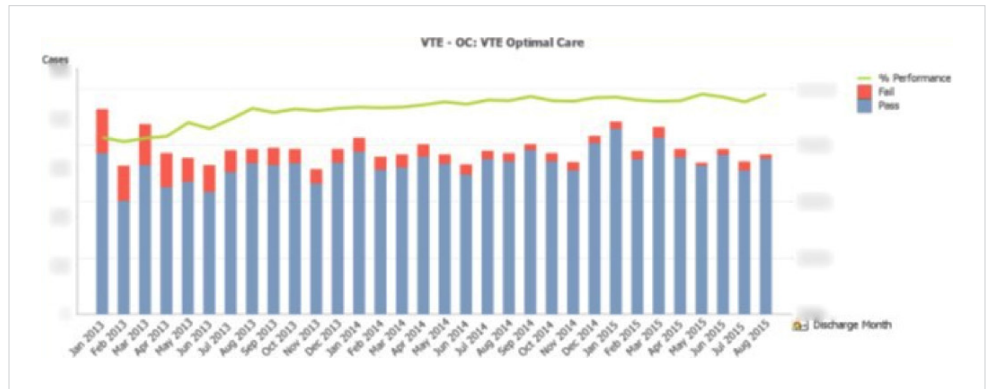


Figure 1. VTE optimal bundle compliance

Integrated system-wide approved VTE order group in 308 order sets

At the beginning of this initiative, Allina did not have a standard VTE risk assessment tool or order group to incorporate into established order sets. The team successfully incorporated a standard, system-wide, evidence-based VTE risk assessment tool and order group into Allina’s order sets with a hyperlink to the VTE guideline. This effort involved updating 308 order sets (including 26 general admission order sets). As a result, almost 100 percent of general admission order sets now contain the standard VTE order group. Most importantly, this effort required effective physician engagement to make the order sets clinically relevant and allow them to be incorporated seamlessly into physician workflow.

Achieved 97.9 percent compliance with VTE prophylaxis (VTE-1)

Through a combination of standard, evidence-based guidelines and decision support, Allina realized a 8 percent absolute increase in VTE prophylaxis provided to patients (or documentation of a reason why prophylaxis wasn’t given), resulting in 97.9 percent actual compliance. Providing access to high quality, trustworthy data in applications with filtering and drill-down capabilities was critical to physician engagement and this successful outcome.

63 percent increase in compliance with VTE warfarin therapy discharge instructions (VTE-5)

Based on a best practice identified at one hospital, Allina made pharmacy personnel accountable for discharge instructions at all hospitals to improve performance and to relieve physicians and nurses of the responsibility. Allina leadership saw putting pharmacists in charge as fundamental for improvement on this metric. The system subsequently realized a 63 percent absolute increase in providing and documenting appropriate instructions for patients with confirmed

VTE discharged on warfarin. This represented an actual compliance rate of 92.4 percent (see Figure 2).

FIGURE 2: SAMPLE VTE DASHBOARD WITH DISCHARGE INSTRUCTION COMPLIANCE SELECTED (VTE-5)

- 1 Filters supporting analysis of VTE performance (e.g., location and admitting department)
- 2 Integrated case mix index, LOS, patient experience and cost information
- 3 VTE discharge instruction performance over time
- 4 Comparison by location, order set, etc.

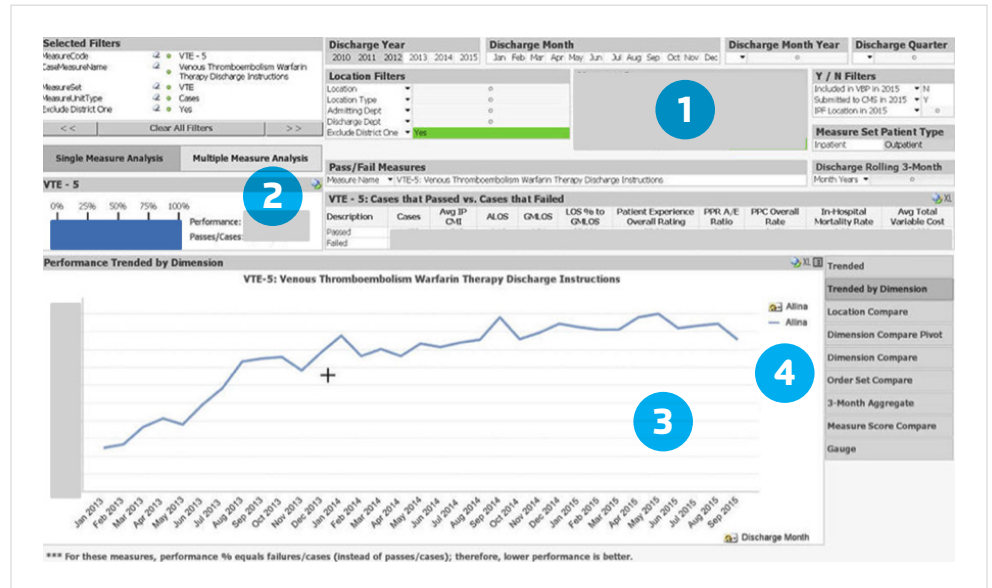


Figure 2. Sample VTE dashboard with discharge instruction compliance selected (VTE-5)

WHAT IS NEXT?

Allina will continue to focus on improving VTE care. It will especially turn its attention to measuring clinical outcomes such as rates of confirmed VTE and the clinical factors associated. The team will also continue to improve the VTE best practice advisories that aid in ordering and applying VTE prophylaxis as well as providing treatment to patients with VTE. 🌟

REFERENCES

1. Kasper D., Fauci A., Hauser S., Longo D., Jameson J., and Loscalzo J. (2015). *Harrison's Principles of Internal Medicine (19th edition)*. Columbus, OH: McGraw-Hill Education.
2. Anderson F.A. Jr., Wheeler H.B., Goldberg R.J., Hosmer D.W., Patwardhan N.A., Jovanoic B., Forcier A. and Dalen J.E.. (1991). A population-based perspective of the hospital incidence and case-fatality rates of deep vein thrombosis and pulmonary embolism. The Worcester DVT Study. *Archives of Internal Medicine*, 151(5), 933-938.
3. Heit J.A., O'Fallon W.M., Petterson T.M., Silverstein M.D., Mohr D.N., Melton L.J. (2002). Relative impact of risk factors for deep vein thrombosis and pulmonary embolism: A population-based study. *Archives of Internal Medicine*, 162(11), 1245-1248.

4. Lindblad B., Eriksson A., Bergqvist D. (1991). Autopsy-verified pulmonary embolism in a surgical department: Analysis of the period from 1951 to 1988. *British Journal of Surgery*, 78(7), 849-852.
5. *Venous Thromboembolism*. (2015, March 11). From The Joint Commission website, http://www.jointcommission.org/venous_thromboembolism/

ABOUT HEALTH CATALYST®

Health Catalyst® is a mission-driven data warehousing, analytics, and outcomes improvement company that helps healthcare organizations of all sizes perform the clinical, financial, and operational reporting and analysis needed for [population health](#) and [accountable care](#). Our proven enterprise data warehouse (EDW) and analytics platform helps improve quality, add efficiency and lower costs in support of more than 50 million patients for organizations ranging from the largest US health system to forward-thinking physician practices.

For more information, visit www.healthcatalyst.com, and follow us on [Twitter](#), [LinkedIn](#), and [Facebook](#).